

JIF BREIZH

SPECIAL SERVICE MULTI PURPOSE VESSEL DP1



GENERAL

Type:	Multipurpose Vessel
Building year:	2014
Model:	EUROCARRIER 2395
Classification:	BV 1 + HULL • MACH AUT-UMS • DYNAPSOS AM / AT Multi Purpose Vessel Unrestricted
Flag:	French
Port of registry:	Marseille
MMSI n°:	228041900
IMO n°:	9648180
Call sign:	FIJG
DP:	1
Vessel Code:	C232
VSAT:	870773186721

DIMENSIONS

Length O.A. (m):	36,95
Beam O.A. (m):	10,54
Draft min. (m):	1.84
Tonnage:	GRT 310 / NT 93
Bollard pull (T):	21
Clear deck area (m2):	236
Total cargo deck (T):	175
Cargo deck load (T/m2):	6
Draft max (m):	2.20



This document is for guidance and information only. All informations provided are given under good faith and are non-contractual.



JIFMAR OFFSHORE SERVICES 120,
av Napoléon Bonaparte 13100
Aix-en-Provence
Tél. (+33) 4 86 82 03 60
Fax (+33) 4 13 94 08 29
www.jifmar.com

©2019 - No part of this leaflet may be reproduced in any form without written permission from Jifmar Offshore Services. This leaflet may be updated without advance notice.



v1.01 - 2023-05-31

JIF BREIZH

DETAILED SPECIFICATIONS



CAPACITIES

Fuel capacity (m3):	176
Fresh water (m3):	20
Sewage tank capacity (m3):	30
Dirty oil tank (m3):	1,5

CONSUMPTION (depend on weather)

Max. speed cons. (L/h):	300
Cruising speed cons. (L/h):	180
Towing speed cons. (L/h):	200
Stand-by cons. (L/h):	25
DP mode cons. (L/h):	100

DECK MACHINERY

Hydraulic crane FWD:	HS AKC 210HE3 10.6T@7.23m
Hydraulic crane AFT:	HLRM 65-4S 13.5T@4.77
Shark jaws:	Karm Fork
Towing winch (T):	KA-20-H-TR - 70 T.m
Towing pins (T):	MKB / Fork Towing Pin System Type : FTP Box (Fork Towing Pin) 86T"
Tugger winch (T):	10
Mooring winch (T):	N/A
Moonpool:	N/A
Boat landing:	Yes
Anchor handling winch (T):	KA-20-H-TR - 70 T/m

COMMUNICATION

VHF:	Sailor RT 6222 Furuno FM-8900S
AIS:	Furuno FA 150
VSAT:	Sailor 900 VSAT

VARIOUS

SAUNA - GYMNASIUM - FUEL TRANSFERT 45m3/H

MACHINERY

Main engine:	2 x Mitsubishi / Type S12A2 634 KW @ 1940 RPM
Max speed (kts):	9,5
Cruising speed (kts):	8
Towing speed (kts):	Depends on the weather and type of towing
Main thrusters:	2 Reintjes Waf 364 + 2 FPP 4Blades
Bow thruster:	1 bow thruster 200KW Caterpillar C18 400 KW
Stern thruster:	1 stern thruster 200 KW

CONTROL & NAVIGATION

Sounder:	Furuno FE-700
Set radar:	Furuno FAR 2117
Autopilot:	Radio Holland SEAPILOT 75
GPS:	Furuno Navigator GP-150
DGPS:	2x C-NAV 3050
Gyrocompass:	2x Xblue quadrans
SART:	Jotron Tron Sart 20
DP System:	Sirhena DP

POWER SUPPLY

Generator set:	1 x 400 KW Caterpillar C18 2 x 154 KW Caterpillar C6.6
Electric system (V):	220VAC/400VAC
Air compressor:	15,7 L/S - 10 Bars
Hydraulic generator:	2 x Electrical Pump 75KVA Linde HPR 2 105LLPP

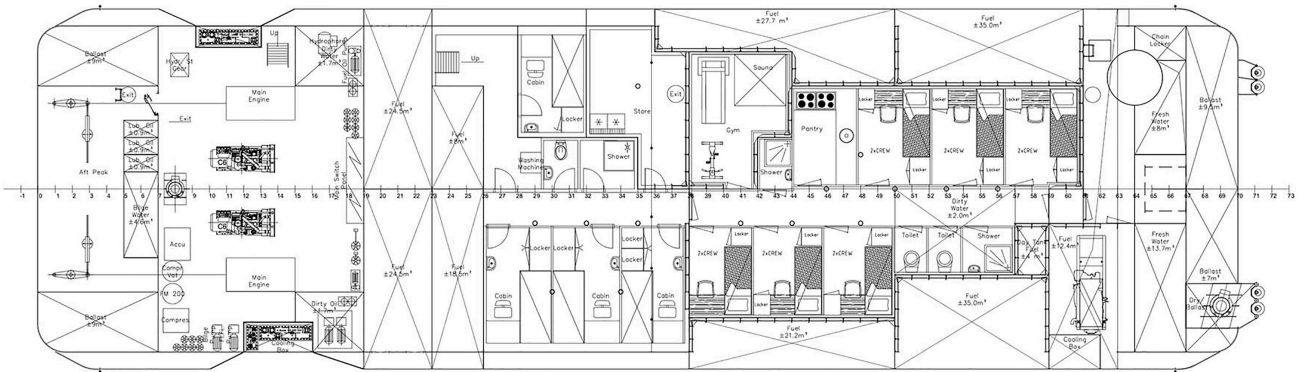
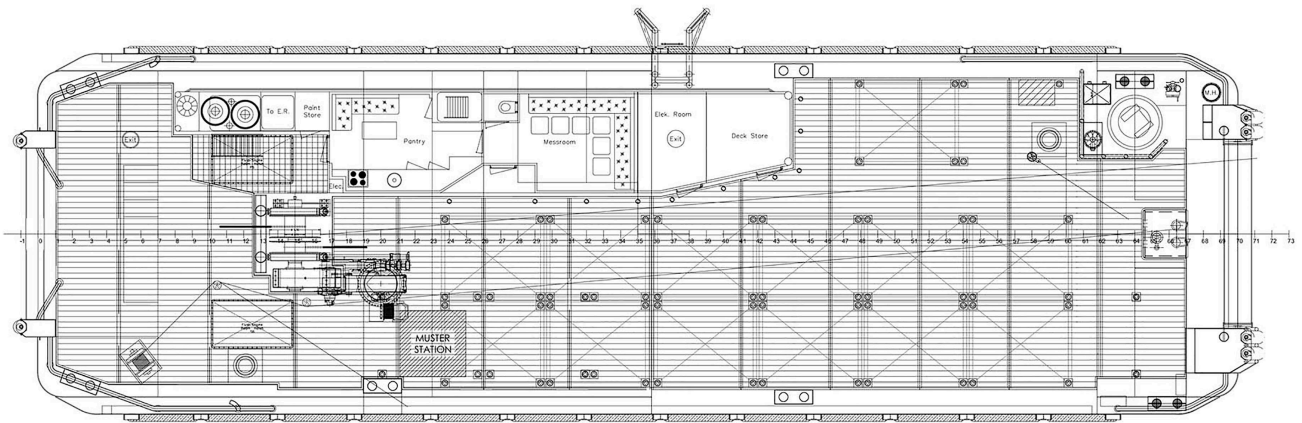
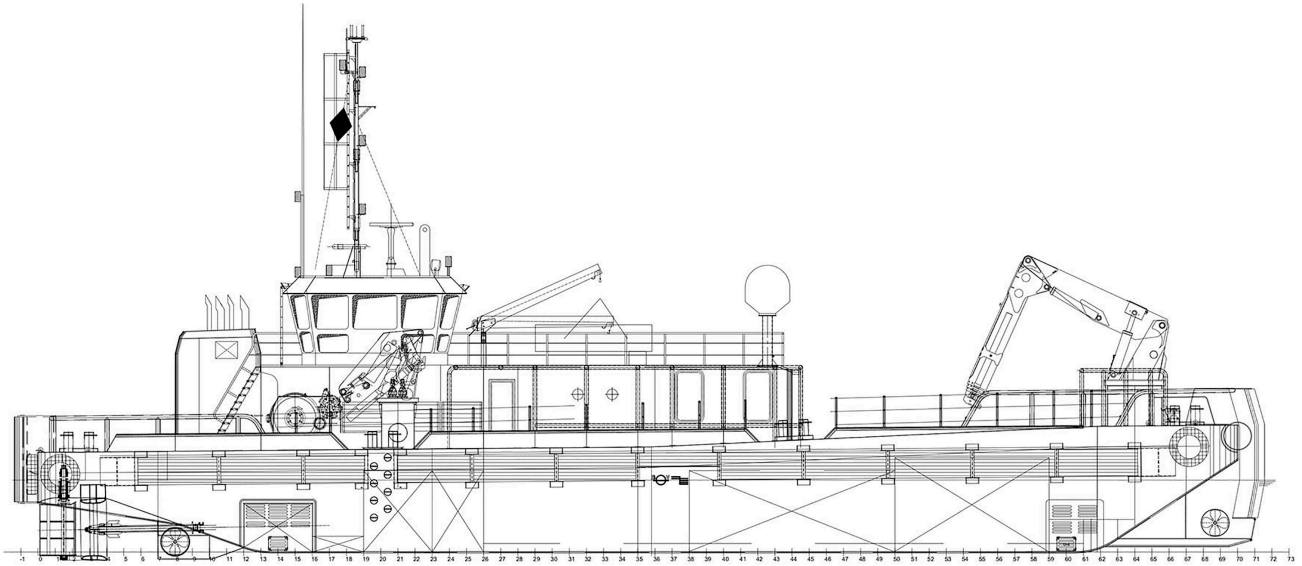
ACCOMODATION

Cabins:	4x1 / 6x2
POB:	18

This document is for guidance and information only. All informations provided are given under good faith and are non-contractual.

JIF BREIZH

GENERAL ARRANGEMENT



This document is for guidance and information only. All informations provided are given under good faith and are non-contractual.



JIFMAR OFFSHORE SERVICES 120,
av Napoléon Bonaparte 13100
Aix-en-Provence
Tél. (+33) 4 86 82 03 60
Fax (+33) 4 13 94 08 29
www.jifmar.com

©2019 - No part of this leaflet may be reproduced in any form without written permission from Jifmar Offshore Services.
This leaflet may be updated without advance notice.



JIF BREIZH

CRANES SPECIFICATIONS



Jif Breizh FWD Cranes HS AKC 210HE3

Jif Breizh AFT Cranes HLRM 65 – 4S

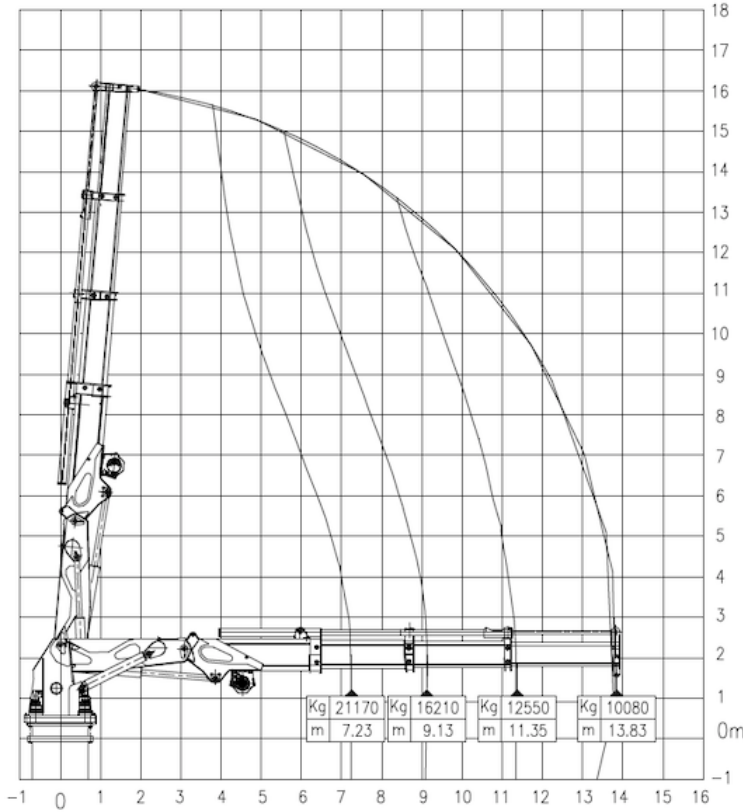
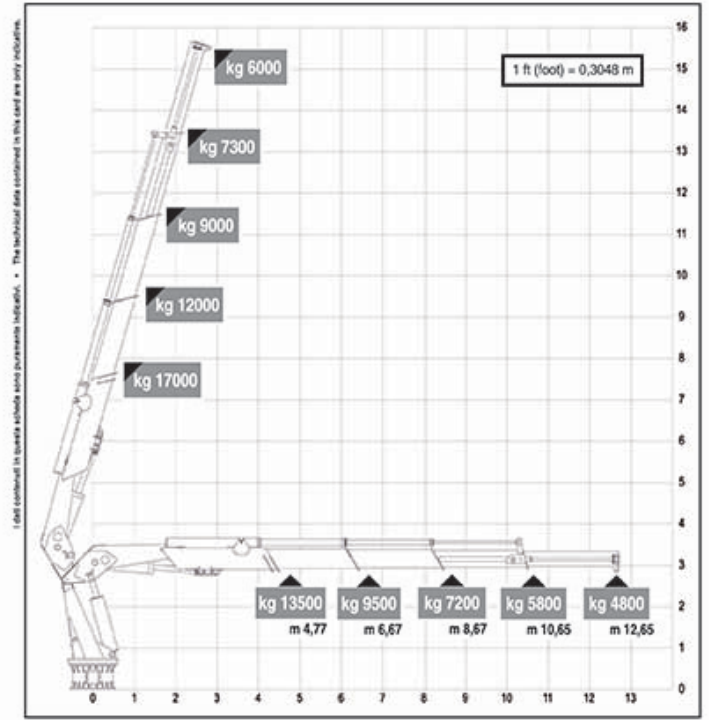


Diagram referred to crane used for offshore use in Sea State 0



This document is for guidance and information only. All informations provided are given under good faith and are non-contractual.



JIFMAR OFFSHORE SERVICES 120,
av Napoléon Bonaparte 13100
Aix-en-Provence
Tél. (+33) 4 86 82 03 60
Fax (+33) 4 13 94 08 29
www.jifmar.com

©2019 - No part of this leaflet may be reproduced in any form without written permission from Jifmar Offshore Services. This leaflet may be updated without advance notice.

