

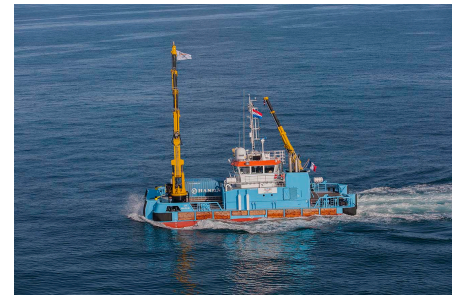


GENERAL

Type:	Multipurpose Vessel
Building year:	2017
Model:	EUROCARRIER 2712
Classification:	BV 1 + HULL • MACH • AUT-UMS, Unrestricted Nav., Multi-Purpose / Special Service GMDSS Area A3, DYNAPOS AM/AT
Flag:	French
Port of registry:	Marseille
MMSI n°:	228093900
IMO n°:	9830422
Call sign:	FJYT
DP:	1
Vessel Code:	C254
VSAT:	8816777132000

DIMENSIONS

Length O.A. (m):	27
Beam O.A. (m):	12,6
Draft min. (m):	2.776
Tonnage:	292 (ums)
Bollard pull (T):	37
Clear deck area (m2):	165
Total cargo deck (T):	95
Cargo deck load (T/m2):	8,5



This document is for guidance and information only. All informations provided are given under good faith and are non-contractual.

JIF MARLIN

DETAILED SPECIFICATIONS



CAPACITIES

Fuel capacity (m3):	95
Fresh water (m3):	63
Sewage tank capacity (m3):	7
Dirty oil tank (m3):	1,7

CONSUMPTION (depend on weather)

Max. speed cons. (L/h):	340
Cruising speed cons. (L/h):	250
Towing speed cons. (L/h):	200
Stand-by cons. (L/h):	25
DP mode cons. (L/h):	130

DECK MACHINERY

Hydraulic crane FWD:	HEILA HLRM 280-3SL - 5T Winch
Hydraulic crane AFT:	HEILA HLRM 140-3S; 26T@5.65m
Shark jaws:	Tugpins GPS 3
Towing winch (T):	50
Towing pins (T):	Tugpins GPS 3
Tugger winch (T):	20
Mooring winch (T):	4 x 7 (option)
Moonpool:	Yes
Boat landing:	Yes
Anchor handling winch (T):	100

COMMUNICATION

VHF:	2 X Sailor RT6222 GMDSS ; 2 ENDEL GMDSS
AIS:	FURUNO FA-170
VSAT:	SAILOR 900

VARIOUS

AIR-CONDITIONING SYSTEM / WIFI / VSAT/ FITNESS ROOM

MACHINERY

Main engine:	2 x Caterpillar C32 ACERT 2 x 970 kW @ 1800 RPM"
Max speed (kts):	9
Cruising speed (kts):	7,5
Towing speed (kts):	5
Main thrusters:	2 Fixed pitch propellers D1850mm, Nozzle
Bow thruster:	300 kW
Stern thruster:	250 kW

CONTROL & NAVIGATION

Sounder:	FE-800
Set radar:	Furuno FAR 2117
Autopilot:	Integrated DP System
GPS:	FURUNO GP-170
DGPS:	2* C-NAV 3050
Gyrocompass:	2* RAYTHEON STD 22
SART:	Tron sart 20
DP System:	SIREHNA DP1

POWER SUPPLY

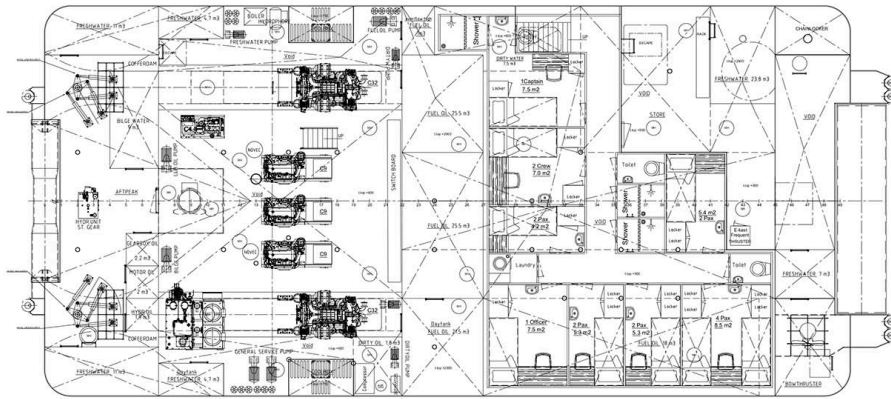
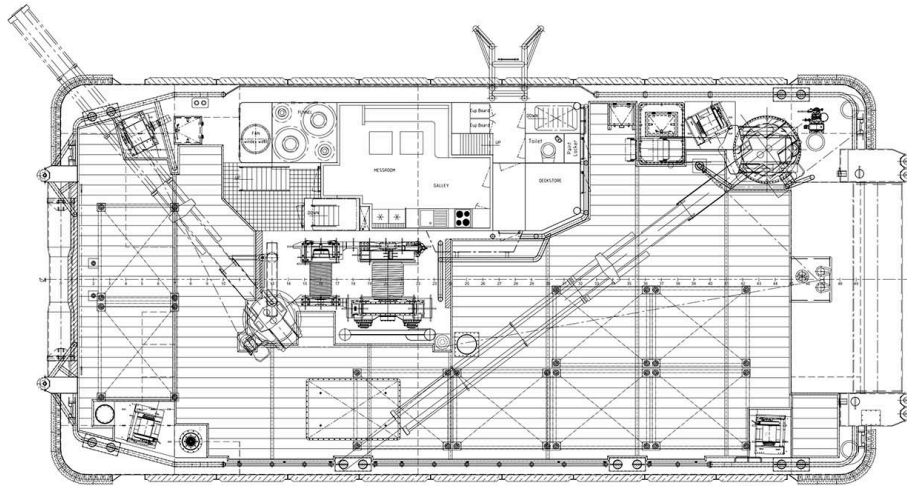
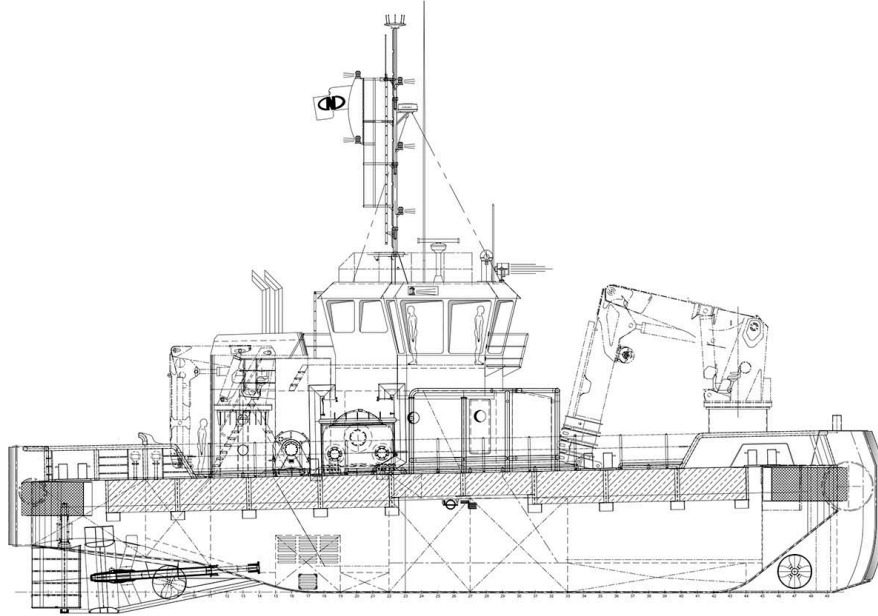
Generator set:	3x Caterpillar C9 200kW@1500rpm - 1x Caterpillar C4.4, 85 kW@1500rpm
Electric system (V):	220VAC / 400 VAC
Air compressor:	7,5kW-56 m3/h
Hydraulic generator:	3x 90kW

ACCOMODATION

POB:	16
Cabins:	2x1 / 5x2 / 1x4

JIF MARLIN

GENERAL ARRANGEMENT



This document is for guidance and information only. All informations provided are given under good faith and are non-contractual.



JIFMAR OFFSHORE SERVICES 120,
av Napoléon Bonaparte 13100
Aix-en-Provence
Tél. (+33) 4 86 82 03 60
Fax (+33) 4 13 94 08 29
www.jifmar.com

©2019 - No part of this leaflet may be reproduced in any form without written permission from Jifmar Offshore Services.
This leaflet may be updated without advance notice.



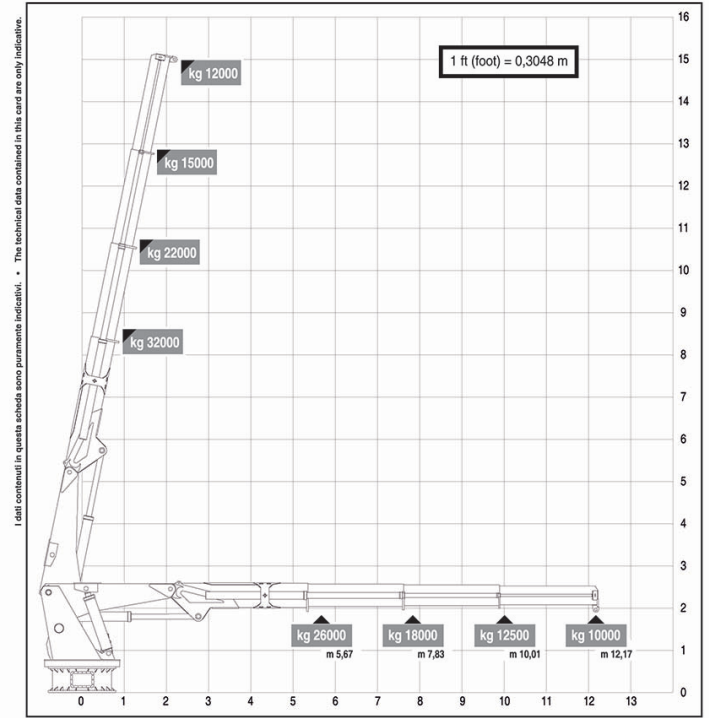
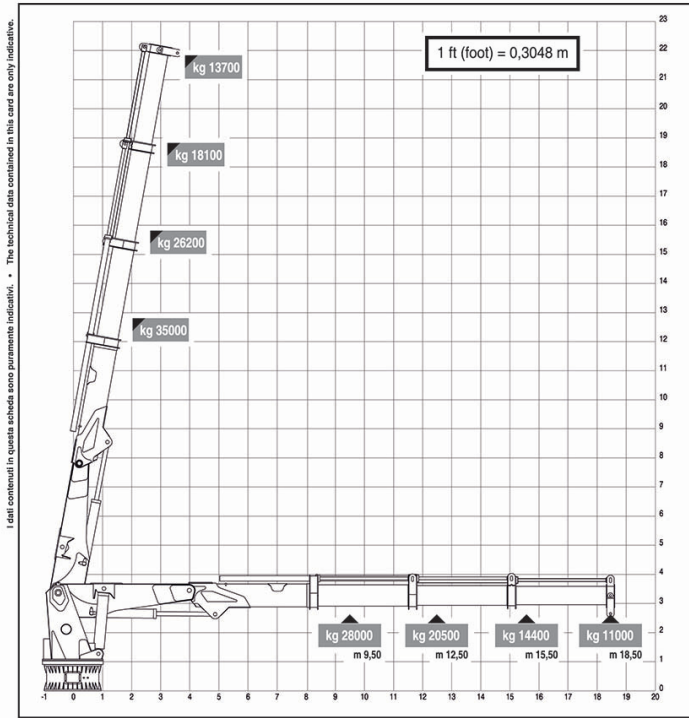
JIF MARLIN

CRANES SPECIFICATIONS



Jif marlin FWD Cranes HLRM 280-3SL :

Jif Marlin AFT Cranes HLRM 140-3S :



This document is for guidance and information only. All informations provided are given under good faith and are non-contractual.



JIFMAR OFFSHORE SERVICES 120,
 av Napoléon Bonaparte 13100
 Aix-en-Provence
 Tél. (+33) 4 86 82 03 60
 Fax (+33) 4 13 94 08 29
 www.jifmar.com

©2019 - No part of this leaflet may be reproduced in any form without written permission from Jifmar Offshore Services. This leaflet may be updated without advance notice.

