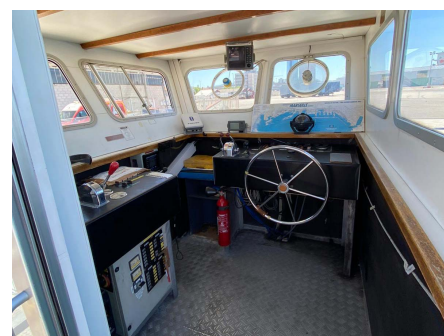
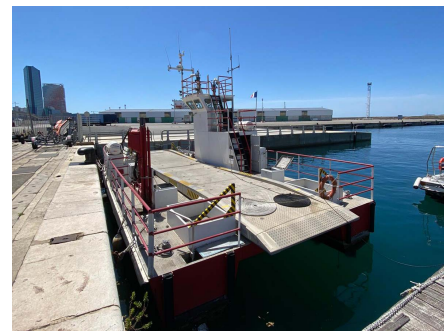


PYTHEAS 2

HARBOUR INTERVENTION VESSEL



GENERAL

Type:	Multipurpose Vessel
Building year:	2001
Vessel code:	MP3531
Last dry dock:	05/05/2015

MACHINERY

Main thrusters:	2x Iveco type 8361 SM 2x190cv
Cruising speed (kts):	10

DECK MACHINERY

Hydraulic crane FWD:	HIAB CMU 750KG a 9m
FIFI:	Yes

DIMENSIONS

Length O.A. (m):	16
Beam O.A. (m):	6.88
Draft min. (m):	1,5

CONTROL & NAVIGATION

Sounder:	Furuno / Gyrocable
GPS:	Furuno GP32
VHF:	Furuno FM 8500 / Furuno FM 2510

POWER SUPPLY

Generator set:	Meco alto SPA/EC3-SA12 / Puissance 4 Kw
----------------	--

This document is for guidance and information only. All informations provided are given under good faith and are non-contractual.