

JIF ARTEMIS

SPECIAL SERVICE MULTI PURPOSE VESSEL DP II



GENERAL

Type:	Multipurpose Vessel DP II
Building year:	2014 (refit in 2019)
Model:	EUROCARRIER 3212
Classification:	I {HULL •MACH Special service Tug Anchor Handling vessel Unrestricted navigation + AUT-UMS , + DYNAPOS AM/AT R
Flag:	French
Port of registry:	Marseille
MMSI n°:	246895000
IMO n°:	9653202
Call sign:	FJZT
DP:	2

DIMENSIONS

Length O.A. (m):	42
Beam O.A. (m):	12
Draft min. (m):	2.293
Tonnage:	496 (ums)
Bollard pull (T):	38
Total cargo deck (T):	depend of the stability
Clear deck area (m2):	280
Cargo deck load (T/m2):	6



This document is for guidance and information only. All informations provided are given under good faith and are non-contractual.



JIFMAR OFFSHORE SERVICES 120,
av Napoléon Bonaparte 13100
Aix-en-Provence
Tél. (+33) 4 86 82 03 60
Fax (+33) 4 13 94 08 29
www.jifmar.com

©2019 - No part of this leaflet may be reproduced in any form without written permission from Jifmar Offshore Services. This leaflet may be updated without advance notice.



v1.01 - 2023-05-31

JIF ARTEMIS

DETAILED SPECIFICATIONS



CAPACITIES

Fuel capacity (m3):	120
Fresh water (m3):	40
Sewage tank capacity (m3):	12
Dirty oil tank (m3):	2,5

CONSUMPTION (depend on weather)

Max. speed cons. (L/h):	333 (8m3/day)
Cruising speed cons. (L/h):	258 (6.2m3/day)
Towing speed cons. (L/h):	250 - 367
Stand-by cons. (L/h):	85
DP mode cons. (L/h):	125 (3m3/day)

DECK MACHINERY

Hydraulic crane FWD:	Heila HLRM 340-2 SL - winch 15T
Hydraulic crane AFT:	Heila HLRM 230-4 SL
Shark jaws:	Triplex type
Towing winch (T):	50
Towing pins (T):	Bow : Hydraulic 2 pins - Aft : Hydraulic 2 pins
Tugger winch (T):	15
Mooring winch (T):	N/A
Moonpool:	YES
Boat landing:	1
Anchor handling winch (T):	125

COMMUNICATION

VHF:	2 x Sailor 6222 VHF DSC
AIS:	Furuno FA-151
VSAT:	Thalos system

VARIOUS

MESS ROOM, SANITARY, FOOD STORE, CENTRAL HEATED, AIR CONDITIONNING, COOLING ROOM, FREEZER ROOM, DRY ROOM, SATELLITE PHONE

MACHINERY

Main engine:	2x CAT 3512 CSS well monted fixed pitch azimuth 1140kw
Max speed (kts):	10
Cruising speed (kts):	7
Towing speed (kts):	0-10
Main thrusters:	2x Azimuth thruster 1140 kw
Bow thruster:	2x Azimuth thruster 250 kw
Stern thruster:	Yes

CONTROL & NAVIGATION

Sounder:	Furuno FE 700
Set radar:	Furuno FAR 2117
Autopilot:	Integrated DP System
GPS:	x1 Furuno GP-150
DGPS:	2 x C nav 5000
Gyrocompass:	x3 Anschutz STD 22 compact
SART:	JORTON Tron SART-20
DP System:	Sirehna Easy DP

POWER SUPPLY

Generator set:	2 x CAT C18 2 x 383kW 1 x CAT C6.6 108 kW Cons 300U/d -> stand by
Electric system (V):	2 x 383kw + 1x 108kw
Air compressor:	7 bar (no continous flow)
Hydraulic generator:	3 electrical pumps (3 x 75Kw) for towing and (2 x 90kw) pumps for anchor handling

ACCOMODATION

POB:	23
Cabins:	5x1 / 9x2

This document is for guidance and information only. All informations provided are given under good faith and are non-contractual.



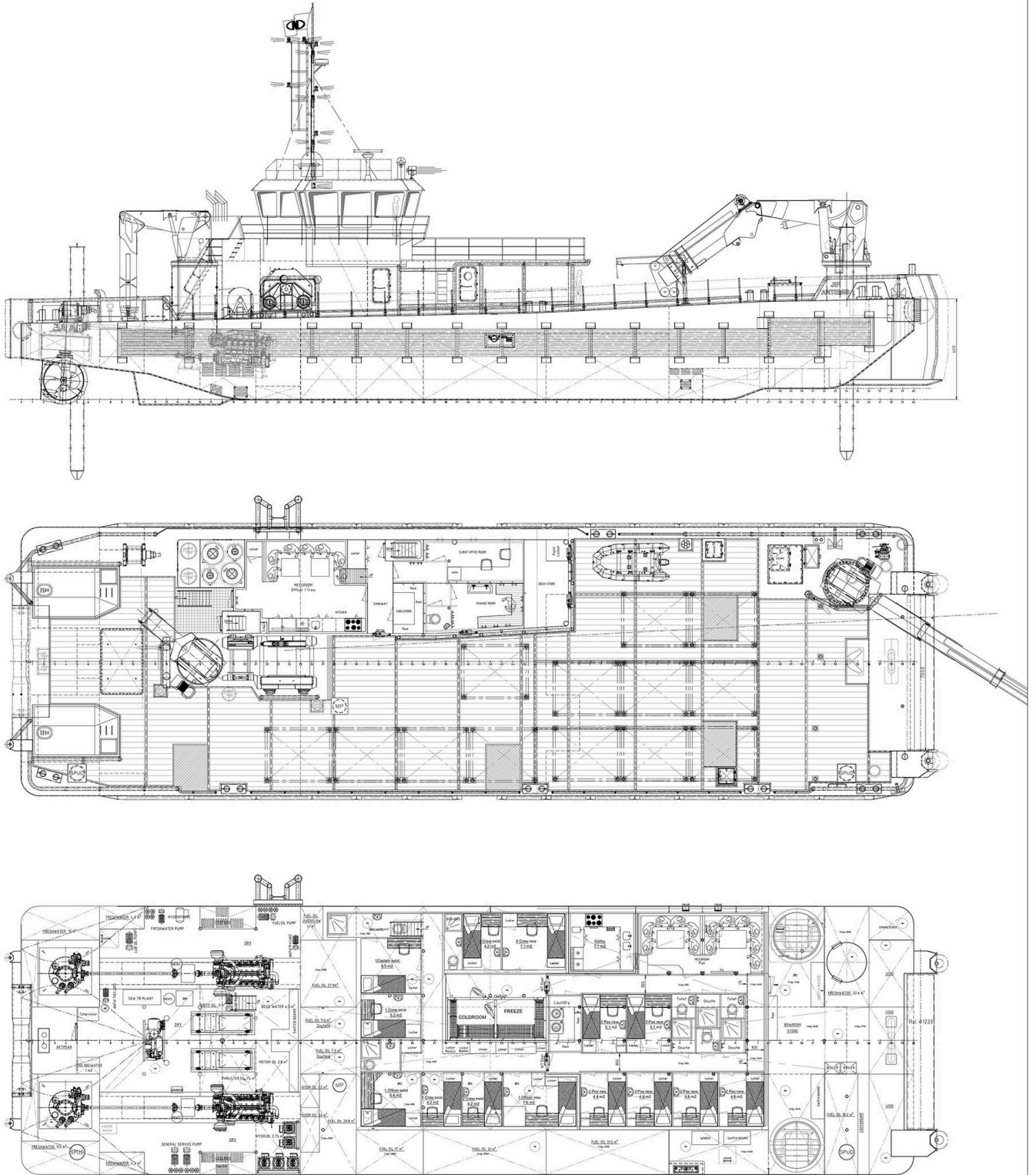
JIFMAR OFFSHORE SERVICES 120,
av Napoléon Bonaparte 13100
Aix-en-Provence
Tél. (+33) 4 86 82 03 60
Fax (+33) 4 13 94 08 29
www.jifmar.com

©2019 - No part of this leaflet may be reproduced in any form without written permission from Jifmar Offshore Services. This leaflet may be updated without advance notice.



JIF ARTEMIS

GENERAL ARRANGEMENT



This document is for guidance and information only. All informations provided are given under good faith and are non-contractual.



JIFMAR OFFSHORE SERVICES 120,
 av Napoléon Bonaparte 13100
 Aix-en-Provence
 Tél. (+33) 4 86 82 03 60
 Fax (+33) 4 13 94 08 29
 www.jifmar.com

©2019 - No part of this leaflet may be reproduced in any form without written permission from Jifmar Offshore Services.
 This leaflet may be updated without advance notice.



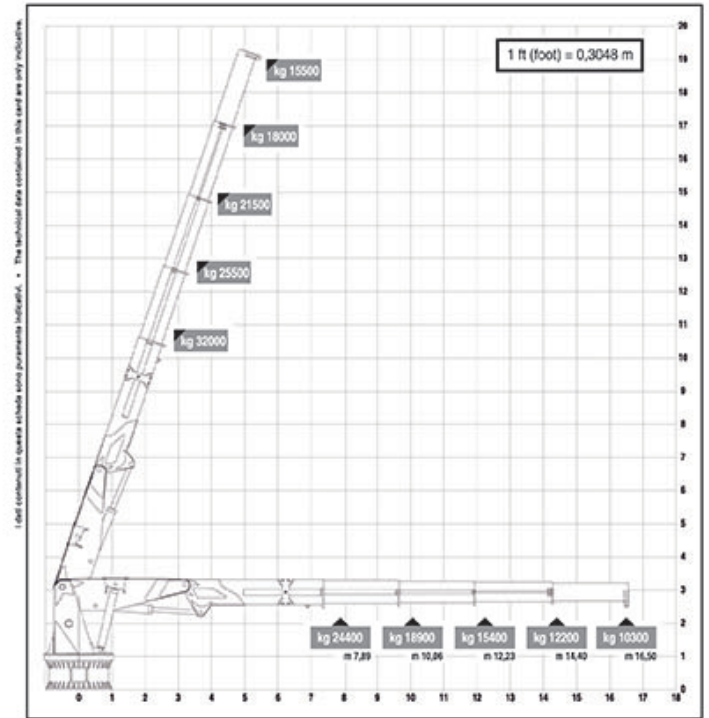
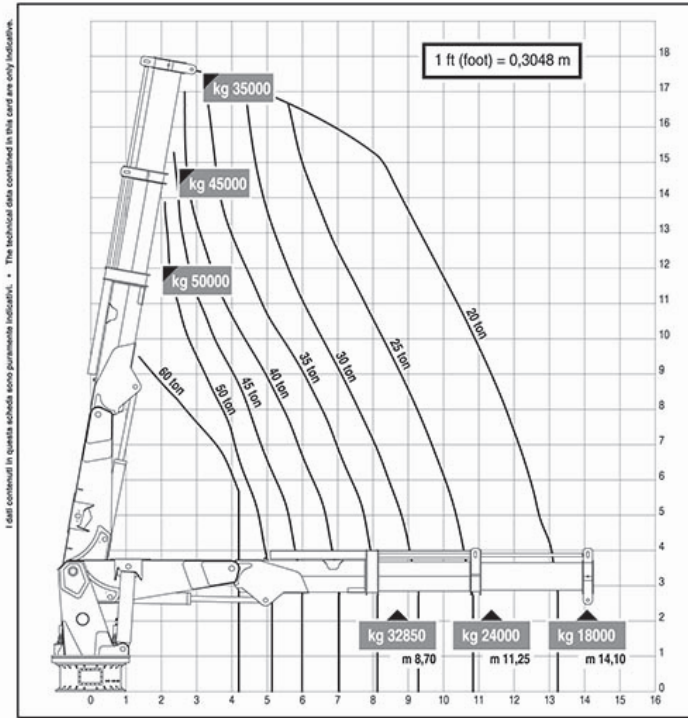
JIF ARTEMIS

CRANES SPECIFICATIONS



Jif Artemis FWD Cranes Heila HLRM 340-2 SL

Jif Artemis AFT Cranes HLRM 230-4SL :



This document is for guidance and information only. All informations provided are given under good faith and are non-contractual.



JIFMAR OFFSHORE SERVICES 120,
 av Napoléon Bonaparte 13100
 Aix-en-Provence
 Tél. (+33) 4 86 82 03 60
 Fax (+33) 4 13 94 08 29
 www.jifmar.com

©2019 - No part of this leaflet may be reproduced in any form without written permission from Jifmar Offshore Services. This leaflet may be updated without advance notice.

