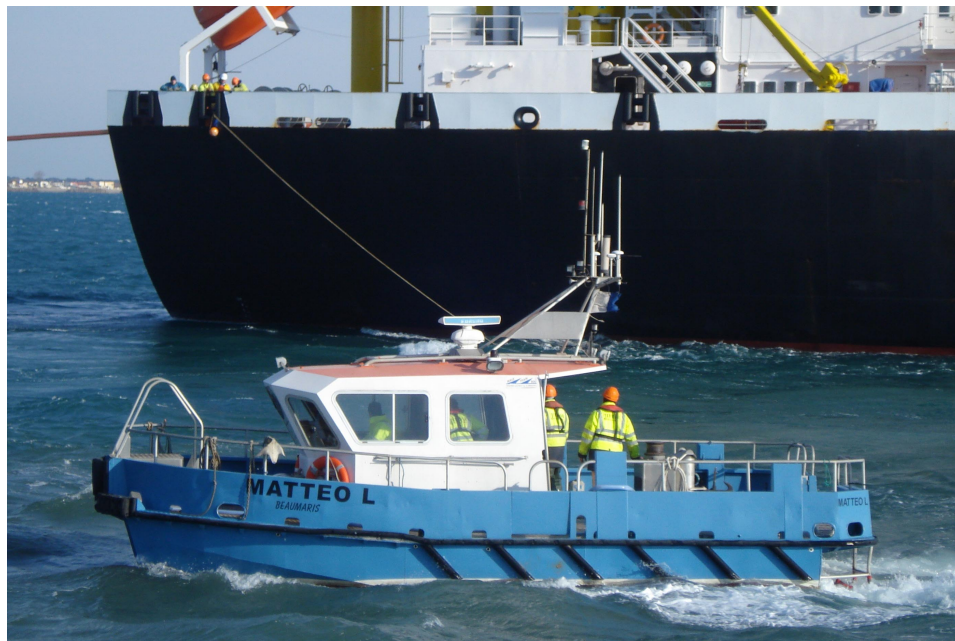


MATTEO L

SPECIAL SERVICE MULTI PURPOSE FAST CATAMARAN



GENERAL

Type:	Patrol and Service Boat
Building year:	2000 (rebuilt in 2010)
Classification:	MCA
Flag:	United Kingdom
Port of registry:	Beaumaris
Call sign:	FGG9024
Vessel code:	C216
Last dry dock:	mars-18

CAPACITIES

Fuel capacity (m3):	0.8
Fresh water (m3):	0.2
Fuel consumption:	60 L/H

CONTROL & NAVIGATION

Sounder:	Furuno Sounder 3D FCV-1200 L
Set radar:	Furuno M 1832 9 GHZ
Autopilot:	AP9 MK III Simrad Roberston
GPS:	Furuno GPS Navigator GP-36

POWER SUPPLY

Electric system (V):	Battery 24V
----------------------	-------------

ACCOMODATION

POB:	12
------	----

DIMENSIONS

Length O.A. (m):	10,3
Beam O.A. (m):	4,9
Draft min. (m):	0,61
Tonnage:	GRT 10 / NRT 3
Clear deck area (m2):	16

MACHINERY

Main engine:	2 x No CUMMINS 6 BT 5,9 M Turbo Diesel 2 x 180 CV
Cruising speed (kts):	8
Max speed (kts):	10

DECK MACHINERY

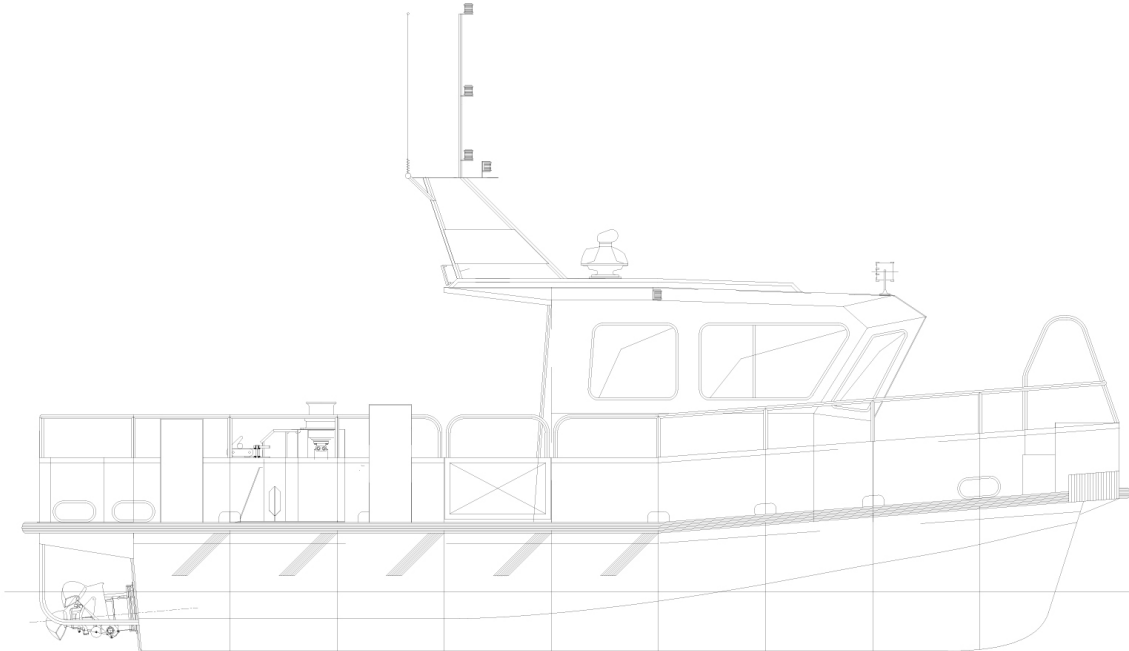
Towing winch (T):	2
-------------------	---

COMMUNICATION

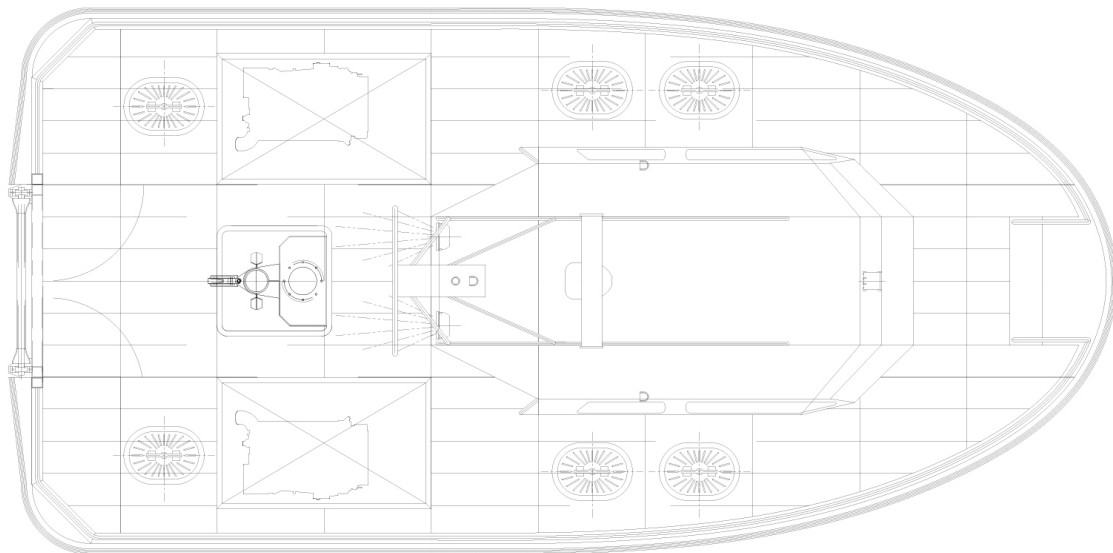
VHF:	VHF Sailor Compact RT 2048
------	----------------------------

MATTEO L

GENERAL ARRANGEMENT



PROFILE FROM STARBOARD



PLAN VIEW

This document is for guidance and information only. All informations provided are given under good faith and are non-contractual.